

Red Bull Ring Circuit SEAT León Eurocup RACE 2

CLASSIFICATION

11/09/2016

Clas. Nº	Entrant	Nat.	Driver	Nat.	Team	Laps	Total Time	Km/h.	Gap	Best	Time	Km/h.
1	3 JULIEN BRICHÉ	FRA	Julien Briché	FRA	JULIEN BRICHÉ	15	24'41.851	157.352		6	1'37.931	158.733
2	1 PCR SPORT	ESP	Mikel Azcona Troyas	ESP	PCR SPORT	15	24'45.890	156.925	4"039	12	1'38.090	158.475
3	5 WOLF-POWER RACING	GBR	Alexander Morgan	GBR	WOLF-POWER RACING	15	24'47.343	156.771	5"492	7	1'38.028	158.576
4	34 STIAN PAULSEN RACING	NOR	Stian Paulsen	NOR	STIAN PAULSEN RACING	15	24'55.704	155.895	13"853	10	1'38.722	157.461
5	4 WOLF-POWER RACING	GBR	Lucas Orrock	GBR	WOLF-POWER RACING	15	24'57.084	155.751	15"233	6	1'38.374	158.018
6	108 PIT LANE COMPETIZIONI	ITA	Nicola Baldan	ITA	PIT LANE COMPETIZIONI	15	24'57.123	155.747	15"272	5	1'38.833	157.284
7	10 BAPORO MOTORSPORT	NLD	Niels Langeveld	NLD	BAPORO MOTORSPORT	15	24'59.918	155.457	18"067	7	1'37.992	158.634
8	61 SEAT AUSTRIA	AUT	Mario Dablander	AUT	SEAT AUSTRIA	15	25'00.886	155.357	19"035	7	1'38.529	157.769
9	20 PCR SPORT	PRT	Lourenço Beirão Da Veiga	PRT	PCR SPORT	15	25'02.588	155.181	20"737	7	1'38.614	157.633
10	44 BAPORO MOTORSPORT	ARG	Facundo Della Motta	ARG	BAPORO MOTORSPORT	15	25'03.010	155.137	21"159	6	1'38.795	157.344
11	99 BAPORO MOTORSPORT	NLD	Maurits Sandberg	NLD	BAPORO MOTORSPORT	15	25'13.592	154.053	31"741	13	1'39.593	156.084
12	112 PIT LANE COMPETIZIONI	ITA	Alberto Vescovi	ITA	PIT LANE COMPETIZIONI	15	25'16.109	153.797	34"258	10	1'39.835	155.705
13	6 BAPORO MOTORSPORT	ESP	Fausti Salom	ESP	BAPORO MOTORSPORT	15	26'07.717	148.734	1'25"866	6	1'38.588	157.675
14	21 MARIE BAUS-COPPENS	FRA	Marie Baus - Coppens	FRA	MARIE BAUS-COPPENS	13	21'51.327	154.106	2 Lap.	6	1'39.432	156.336

NOT CLASSIFIED

15	50 NELSON LUKES	FRA	Nelson Lukes	FRA	NELSON LUKES	9	15'18.538	152.311	6 Lap.	6	1'38.864	157.235
----	-----------------	-----	--------------	-----	--------------	---	-----------	---------	--------	---	----------	---------

Fastest lap Julien Briché 1'37.931 158.733 Km/h.

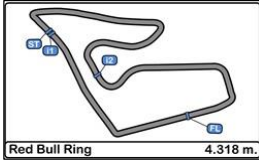
CAR 5 3 SECONDS TIME PENALTY ADDED TO RACE TIME

Published at:.....

Track Status **DRY**

Stewards:	Race Director:	Timekeeper: 
-----------	----------------	--





Red Bull Ring Circuit SEAT León Eurocup RACE 2

LAP ANALYSIS

11/09/2016

Number	1			3			4			5			6		
	Lap Time	Partial	Speed	Lap Time	Partial	Speed	Lap Time	Partial	Speed	Lap Time	Partial	Speed	Lap Time	Partial	Speed
1ª - 1	0'30.054	0'30.054	199.631	0'29.265	0'29.265	208.898	0'30.009	0'30.009	206.107	0'30.542	0'30.542	206.501	0'30.526	0'30.526	201.118
1ª - 2	1'15.600	0'45.546		1'13.767	0'44.502		1'16.062	0'46.053		1'15.756	0'45.214		1'16.332	0'45.806	
1ª - 3	1'46.575	0'30.975		1'44.761	0'30.994		1'46.679	0'30.617		1'46.491	0'30.735		1'47.430	0'31.098	
2ª - 1	0'25.522	0'25.522	209.709	0'24.863	0'24.863	213.439	0'25.413	0'25.413	210.938	0'24.949	0'24.949	213.862	0'24.793	0'24.793	206.107
2ª - 2	1'09.467	0'43.945		1'08.917	0'44.054		1'09.659	0'44.246		1'08.912	0'43.963		1'09.203	0'44.410	
2ª - 3	1'39.852	0'30.385		1'39.191	0'30.274		1'40.003	0'30.344		1'39.197	0'30.285		1'39.573	0'30.370	
3ª - 1	0'24.444	0'24.444	212.599	0'24.554	0'24.554	212.599	0'24.549	0'24.549	215.140	0'24.772	0'24.772	210.117	0'24.457	0'24.457	216.868
3ª - 2	1'09.084	0'44.640		1'08.310	0'43.756		1'10.308	0'45.759		1'08.846	0'44.074		1'09.203	0'44.746	
3ª - 3	1'39.544	0'30.460		1'38.571	0'30.261		1'41.555	0'31.247		1'38.897	0'30.051		1'40.371	0'31.168	
4ª - 1	0'24.459	0'24.459	214.712	0'24.463	0'24.463	212.599	0'24.963	0'24.963	213.018	0'24.372	0'24.372	213.862	0'25.029	0'25.029	214.286
4ª - 2	1'08.197	0'43.738		1'07.987	0'43.524		1'10.112	0'45.149		1'08.163	0'43.791		1'10.003	0'44.974	
4ª - 3	1'38.580	0'30.383		1'38.030	0'30.043		1'40.361	0'30.249		1'38.201	0'30.038		1'40.194	0'30.191	
5ª - 1	0'24.673	0'24.673	212.181	0'24.540	0'24.540	212.181	0'24.400	0'24.400	216.433	0'24.381	0'24.381	214.712	0'24.479	0'24.479	217.304
5ª - 2	1'08.439	0'43.766		1'08.148	0'43.608		1'08.383	0'43.983		1'08.010	0'43.629		1'08.666	0'44.187	
5ª - 3	1'38.927	0'30.488		1'38.124	0'29.976		1'38.608	0'30.225		1'38.074	0'30.064		1'38.958	0'30.292	
6ª - 1	0'24.476	0'24.476	213.018	0'24.390	0'24.390	213.439	0'24.538	0'24.538	215.569	0'24.562	0'24.562	214.286	0'24.502	0'24.502	216.868
6ª - 2	1'08.298	0'43.822		1'07.847	0'43.457		1'08.117	0'43.579		1'08.231	0'43.669		1'08.308	0'43.806	
6ª - 3	1'38.374	0'30.076		1'37.931	0'30.084		1'38.374	0'30.257		1'38.245	0'30.014		1'38.588	0'30.280	
7ª - 1	0'24.584	0'24.584	213.439	0'24.420	0'24.420	213.862	0'24.372	0'24.372	216.868	0'24.457	0'24.457	213.862	0'24.404	0'24.404	216.868
7ª - 2	1'08.283	0'43.699		1'08.028	0'43.608		1'08.230	0'43.858		1'08.014	0'43.557		1'08.497	0'44.093	
7ª - 3	1'38.359	0'30.076		1'37.997	0'29.969		1'38.603	0'30.373		1'38.028	0'30.014		1'38.912	0'30.415	
8ª - 1	0'24.562	0'24.562	213.018	0'24.456	0'24.456	213.439	0'24.716	0'24.716	211.765	0'24.483	0'24.483	214.286	0'24.644	0'24.644	216.001
8ª - 2	1'08.234	0'43.672		1'08.065	0'43.609		1'08.901	0'44.185		1'08.192	0'43.709		1'08.741	0'44.097	
8ª - 3	1'38.253	0'30.019		1'38.162	0'30.097		1'39.215	0'30.314		1'38.366	0'30.174		1'39.133	0'30.392	
9ª - 1	0'24.468	0'24.468	213.862	0'24.497	0'24.497	213.439	0'25.071	0'25.071	213.018	0'24.657	0'24.657	213.439	0'24.502	0'24.502	216.433
9ª - 2	1'08.102	0'43.634		1'08.195	0'43.698		1'09.403	0'44.332		1'08.336	0'43.679		1'09.752	0'45.250	
9ª - 3	1'38.234	0'30.132		1'38.345	0'30.150		1'40.825	0'31.422		1'38.419	0'30.083		1'42.634	0'32.882	
10ª - 1	0'24.542	0'24.542	213.018	0'24.510	0'24.510	213.862	0'24.520	0'24.520	214.286	0'24.613	0'24.613	213.018	0'25.001	0'25.001	215.569
10ª - 2	1'08.232	0'43.690		1'08.122	0'43.612		1'08.315	0'43.795		1'08.424	0'43.811		1'09.613	0'44.612	
10ª - 3	1'38.349	0'30.117		1'38.251	0'30.129		1'38.517	0'30.202		1'38.503	0'30.079		1'41.944	0'32.331	
11ª - 1	0'24.448	0'24.448	213.439	0'24.655	0'24.655	213.439	0'24.594	0'24.594	213.018	0'24.471	0'24.471	213.862	0'26.505	0'26.505	189.474
11ª - 2	1'08.036	0'43.588		1'08.240	0'43.585		1'08.268	0'43.674		1'08.258	0'43.787		1'19.719	0'53.214	
11ª - 3	1'38.099	0'30.063		1'38.340	0'30.100		1'38.438	0'30.170		1'38.258	0'30.000		2'04.791	0'45.072	PIT
12ª - 1	0'24.518	0'24.518	213.018	0'24.549	0'24.549	212.181	0'24.427	0'24.427	214.286	0'24.477	0'24.477	213.862	1'02.357	1'02.357	205.715
12ª - 2	1'08.007	0'43.489		1'08.237	0'43.688		1'08.352	0'43.925		1'08.234	0'43.757		1'46.642	0'44.285	
12ª - 3	1'38.090	0'30.083		1'38.340	0'30.103		1'38.613	0'30.261		1'38.323	0'30.089		2'17.220	0'30.578	
13ª - 1	0'24.551	0'24.551	213.018	0'24.524	0'24.524	213.439	0'24.584	0'24.584	214.286	0'24.423	0'24.423	214.286	0'24.762	0'24.762	211.765
13ª - 2	1'08.089	0'43.538		1'08.251	0'43.727		1'08.427	0'43.843		1'08.283	0'43.860		1'08.804	0'44.042	
13ª - 3	1'38.242	0'30.153		1'38.474	0'30.223		1'38.733	0'30.306		1'38.414	0'30.131		1'39.307	0'30.503	
14ª - 1	0'24.551	0'24.551	213.018	0'24.499	0'24.499	213.439	0'24.616	0'24.616	213.862	0'24.469	0'24.469	214.286	0'24.909	0'24.909	210.938
14ª - 2	1'08.112	0'43.561		1'08.225	0'43.726		1'08.574	0'43.958		1'08.243	0'43.774		1'08.897	0'43.988	
14ª - 3	1'38.174	0'30.062		1'38.446	0'30.221		1'39.072	0'30.498		1'38.359	0'30.116		1'39.521	0'30.624	
15ª - 1	0'24.563	0'24.563	213.439	0'24.566	0'24.566	213.018	0'24.982	0'24.982	213.862	0'24.491	0'24.491	213.862	0'24.641	0'24.641	211.765
15ª - 2	1'08.108	0'43.545		1'08.190	0'43.624		1'08.901	0'43.919		1'08.370	0'43.879		1'08.794	0'44.153	
15ª - 3	1'38.238	0'30.130		1'38.888	0'30.698		1'39.488	0'30.587		1'41.568	0'33.198		1'39.141	0'30.347	

Ideal Lap	
0'24.444	0'24.444
1'07.933	0'43.489
1'37.952	0'30.019

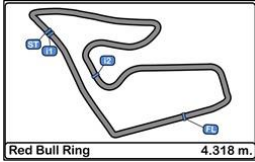
Ideal Lap	
0'24.390	0'24.390
1'07.847	0'43.457
1'37.816	0'29.969

Ideal Lap	
0'24.372	0'24.372
1'07.951	0'43.579
1'38.121	0'30.170

Ideal Lap	
0'24.372	0'24.372
1'07.929	0'43.557
1'37.929	0'30.000

Ideal Lap	
0'24.404	0'24.404
1'08.210	0'43.806
1'38.401	0'30.191

Ideal Best Lap	
0'24.237	0'24.237
1'07.694	0'43.457
1'37.663	0'29.969



Red Bull Ring Circuit SEAT León Eurocup RACE 2

LAP ANALYSIS

11/09/2016

Number	10			20			21			34			44		
	Lap Time	Partial	Speed	Lap Time	Partial	Speed	Lap Time	Partial	Speed	Lap Time	Partial	Speed	Lap Time	Partial	Speed
1 ^a - 1	0'31.187	0'31.187	208.495	0'29.853	0'29.853	198.166	0'31.213	0'31.213	199.631	0'32.057	0'32.057	211.351	0'30.722	0'30.722	194.946
1 ^a - 2	1'16.472	0'45.285		1'14.997	0'45.144		1'17.315	0'46.102		1'16.727	0'44.670		1'16.653	0'45.931	
1 ^a - 3	1'47.713	0'31.241		1'45.901	0'30.904		1'48.787	0'31.472		1'47.685	0'30.958		1'48.530	0'31.877	
2 ^a - 1	0'24.888	0'24.888	214.286	0'24.748	0'24.748	211.765	0'24.721	0'24.721	215.569	0'25.214	0'25.214	213.862	0'24.732	0'24.732	212.599
2 ^a - 2	1'09.571	0'44.683		1'09.150	0'44.402		1'09.720	0'44.999		1'09.901	0'44.687		1'09.789	0'45.057	
2 ^a - 3	1'39.802	0'30.231		1'39.572	0'30.422		1'40.213	0'30.493		1'40.148	0'30.247		1'40.244	0'30.455	
3 ^a - 1	0'24.386	0'24.386	218.624	0'25.026	0'25.026	213.018	0'24.464	0'24.464	214.286	0'24.436	0'24.436	215.569	0'24.458	0'24.458	215.140
3 ^a - 2	1'09.451	0'45.065		1'10.323	0'45.297		1'09.132	0'44.668		1'08.803	0'44.367		1'08.845	0'44.387	
3 ^a - 3	1'41.067	0'31.616		1'42.829	0'32.506		1'39.666	0'30.534		1'39.949	0'31.146		1'39.653	0'30.808	
4 ^a - 1	0'25.034	0'25.034	216.868	0'25.096	0'25.096	213.439	0'25.198	0'25.198	201.870	0'24.792	0'24.792	213.862	0'25.101	0'25.101	210.117
4 ^a - 2	1'09.515	0'44.481		1'10.477	0'45.381		1'10.475	0'45.277		1'09.085	0'44.293		1'10.682	0'45.581	
4 ^a - 3	1'39.526	0'30.011		1'40.844	0'30.367		1'41.309	0'30.834		1'39.157	0'30.072		1'41.181	0'30.499	
5 ^a - 1	0'24.538	0'24.538	216.868	0'24.536	0'24.536	215.140	0'24.579	0'24.579	205.715	0'24.445	0'24.445	215.140	0'24.379	0'24.379	214.286
5 ^a - 2	1'11.001	0'46.463		1'08.673	0'44.137		1'09.392	0'44.813		1'08.480	0'44.035		1'08.736	0'44.357	
5 ^a - 3	1'41.400	0'30.399		1'39.055	0'30.382		1'39.915	0'30.523		1'38.781	0'30.301		1'39.008	0'30.272	
6 ^a - 1	0'24.361	0'24.361	217.304	0'24.297	0'24.297	216.433	0'24.801	0'24.801	212.181	0'24.444	0'24.444	215.569	0'24.360	0'24.360	214.712
6 ^a - 2	1'08.002	0'43.641		1'08.353	0'44.056		1'09.104	0'44.303		1'08.314	0'43.870		1'08.432	0'44.072	
6 ^a - 3	1'38.126	0'30.124		1'38.625	0'30.272		1'39.432	0'30.328		1'38.745	0'30.431		1'38.795	0'30.363	
7 ^a - 1	0'24.237	0'24.237	217.742	0'24.388	0'24.388	217.304	0'24.963	0'24.963	210.527	0'24.336	0'24.336	216.001	0'24.724	0'24.724	210.117
7 ^a - 2	1'07.820	0'43.583		1'08.238	0'43.850		1'09.140	0'44.177		1'08.262	0'43.926		1'08.833	0'44.109	
7 ^a - 3	1'37.992	0'30.172		1'38.614	0'30.376		1'39.704	0'30.564		1'38.739	0'30.477		1'39.605	0'30.772	
8 ^a - 1	0'25.094	0'25.094	212.599	0'25.068	0'25.068	213.862	0'24.505	0'24.505	213.018	0'24.456	0'24.456	216.001	0'24.732	0'24.732	212.181
8 ^a - 2	1'09.072	0'43.978		1'09.113	0'44.045		1'09.027	0'44.522		1'08.704	0'44.248		1'08.828	0'44.096	
8 ^a - 3	1'39.752	0'30.680		1'39.723	0'30.610		1'39.747	0'30.720		1'39.007	0'30.303		1'39.371	0'30.543	
9 ^a - 1	0'24.726	0'24.726	215.569	0'25.194	0'25.194	212.599	0'24.892	0'24.892	213.439	0'24.351	0'24.351	215.140	0'24.532	0'24.532	214.286
9 ^a - 2	1'08.906	0'44.180		1'09.527	0'44.333		1'09.314	0'44.422		1'08.513	0'44.162		1'08.921	0'44.389	
9 ^a - 3	1'39.861	0'30.955		1'40.399	0'30.872		1'40.043	0'30.729		1'38.881	0'30.368		1'39.518	0'30.597	
10 ^a - 1	0'24.647	0'24.647	215.140	0'24.698	0'24.698	209.709	0'24.896	0'24.896	212.599	0'24.266	0'24.266	215.569	0'25.336	0'25.336	214.286
10 ^a - 2	1'08.910	0'44.263		1'09.373	0'44.675		1'09.675	0'44.779		1'08.320	0'44.054		1'09.735	0'44.399	
10 ^a - 3	1'39.308	0'30.398		1'39.737	0'30.364		1'40.398	0'30.723		1'38.722	0'30.402		1'40.391	0'30.656	
11 ^a - 1	0'24.455	0'24.455	213.862	0'24.557	0'24.557	215.140	0'25.591	0'25.591	203.008	0'24.363	0'24.363	216.433	0'24.346	0'24.346	216.868
11 ^a - 2	1'08.689	0'44.234		1'08.733	0'44.176		1'11.654	0'46.063		1'08.380	0'44.017		1'08.370	0'44.024	
11 ^a - 3	1'38.957	0'30.268		1'39.189	0'30.456		1'42.154	0'30.500		1'38.850	0'30.470		1'38.805	0'30.435	
12 ^a - 1	0'24.300	0'24.300	216.433	0'24.573	0'24.573	214.286	0'24.860	0'24.860	210.117	0'24.338	0'24.338	215.569	0'24.457	0'24.457	216.433
12 ^a - 2	1'08.456	0'44.156		1'08.969	0'44.396		1'09.201	0'44.341		1'08.261	0'43.923		1'08.657	0'44.200	
12 ^a - 3	1'38.900	0'30.444		1'39.306	0'30.337		1'39.781	0'30.580		1'39.798	0'31.537		1'39.045	0'30.388	
13 ^a - 1	0'24.270	0'24.270	219.513	0'24.591	0'24.591	213.862	0'24.728	0'24.728	212.181	0'24.551	0'24.551	213.439	0'24.603	0'24.603	214.286
13 ^a - 2	1'09.708	0'45.438		1'08.927	0'44.336		1'09.295	0'44.567		1'08.841	0'44.290		1'09.068	0'44.465	
13 ^a - 3	1'40.193	0'30.485		1'39.517	0'30.590		1'40.178	0'30.883		1'39.157	0'30.316		1'39.691	0'30.623	
14 ^a - 1	0'24.379	0'24.379	215.569	0'24.631	0'24.631	213.439				0'24.632	0'24.632	213.018	0'25.473	0'25.473	210.527
14 ^a - 2	1'08.240	0'43.861		1'09.085	0'44.454					1'08.699	0'44.067		1'09.672	0'44.199	
14 ^a - 3	1'38.662	0'30.422		1'39.646	0'30.561					1'39.072	0'30.373		1'40.076	0'30.404	
15 ^a - 1	0'24.611	0'24.611	215.140	0'24.679	0'24.679	213.862				0'24.736	0'24.736	211.351	0'24.573	0'24.573	214.286
15 ^a - 2	1'08.398	0'43.787		1'09.123	0'44.444					1'08.786	0'44.050		1'08.652	0'44.079	
15 ^a - 3	1'38.659	0'30.261		1'39.631	0'30.508					1'39.013	0'30.227		1'39.097	0'30.445	

Ideal Lap	
0'24.237	0'24.237
1'07.820	0'43.583
1'37.831	0'30.011

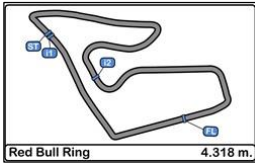
Ideal Lap	
0'24.297	0'24.297
1'08.147	0'43.850
1'38.419	0'30.272

Ideal Lap	
0'24.464	0'24.464
1'08.641	0'44.177
1'38.969	0'30.328

Ideal Lap	
0'24.266	0'24.266
1'08.136	0'43.870
1'38.208	0'30.072

Ideal Lap	
0'24.346	0'24.346
1'08.370	0'44.024
1'38.642	0'30.272

Ideal Best Lap	
0'24.237	0'24.237
1'07.694	0'43.457
1'37.663	0'29.969



Red Bull Ring Circuit SEAT León Eurocup RACE 2

LAP ANALYSIS

11/09/2016

Number	50			61			99			108			112		
	Lap Time	Partial	Speed	Lap Time	Partial	Speed	Lap Time	Partial	Speed	Lap Time	Partial	Speed	Lap Time	Partial	Speed
1 ^a - 1	0'29.134	0'29.134	203.774	0'29.975	0'29.975	202.627	0'32.659	0'32.659	199.631	0'28.984	0'28.984	208.898	0'32.266	0'32.266	198.530
1 ^a - 2	1'14.782	0'45.648		1'15.414	0'45.439		1'18.545	0'45.886		1'13.566	0'44.582		1'18.139	0'45.873	
1 ^a - 3	1'45.710	0'30.928		1'46.587	0'31.173		1'49.832	0'31.287		1'44.624	0'31.058		1'49.511	0'31.372	
2 ^a - 1	0'24.645	0'24.645	213.439	0'25.188	0'25.188	215.569	0'24.747	0'24.747	203.774	0'24.962	0'24.962	209.303	0'24.732	0'24.732	208.898
2 ^a - 2	1'09.002	0'44.357		1'09.296	0'44.108		1'09.657	0'44.910		1'09.596	0'44.634		1'09.518	0'44.786	
2 ^a - 3	1'39.556	0'30.554		1'39.649	0'30.353		1'40.781	0'31.124		1'40.443	0'30.847		1'40.676	0'31.158	
3 ^a - 1	0'24.979	0'24.979	211.765	0'24.403	0'24.403	212.599	0'24.967	0'24.967	198.530	0'25.216	0'25.216	210.117	0'24.822	0'24.822	213.439
3 ^a - 2	1'10.389	0'45.410		1'10.157	0'45.754		1'09.831	0'44.864		1'10.033	0'44.817		1'09.147	0'44.325	
3 ^a - 3	1'41.088	0'30.699		1'41.271	0'31.114		1'40.485	0'30.654		1'40.449	0'30.416		1'40.226	0'31.079	
4 ^a - 1	0'24.428	0'24.428	215.140	0'25.962	0'25.962	204.934	0'24.850	0'24.850	203.774	0'24.466	0'24.466	215.140	0'24.617	0'24.617	212.181
4 ^a - 2	1'09.155	0'44.727		1'11.059	0'45.097		1'09.559	0'44.709		1'08.446	0'43.980		1'09.176	0'44.559	
4 ^a - 3	1'39.577	0'30.422		1'41.433	0'30.374		1'40.167	0'30.608		1'38.912	0'30.466		1'40.288	0'31.112	
5 ^a - 1	0'24.445	0'24.445	215.140	0'24.347	0'24.347	216.868	0'24.772	0'24.772	211.351	0'24.409	0'24.409	216.001	0'24.579	0'24.579	208.898
5 ^a - 2	1'08.530	0'44.085		1'08.461	0'44.114		1'09.159	0'44.387		1'08.312	0'43.903		1'09.243	0'44.664	
5 ^a - 3	1'38.935	0'30.405		1'38.769	0'30.308		1'39.832	0'30.673		1'38.833	0'30.521		1'40.040	0'30.797	
6 ^a - 1	0'24.489	0'24.489	214.712	0'24.405	0'24.405	215.140	0'24.899	0'24.899	211.351	0'24.446	0'24.446	214.712	0'24.472	0'24.472	213.018
6 ^a - 2	1'08.380	0'43.891		1'08.292	0'43.887		1'09.348	0'44.449		1'08.918	0'44.472		1'09.289	0'44.817	
6 ^a - 3	1'38.864	0'30.484		1'38.650	0'30.358		1'40.892	0'31.544		1'39.421	0'30.503		1'41.125	0'31.836	
7 ^a - 1	0'24.648	0'24.648	213.862	0'24.334	0'24.334	217.304	0'24.982	0'24.982	209.303	0'24.576	0'24.576	215.140	0'24.710	0'24.710	213.862
7 ^a - 2	1'08.747	0'44.099		1'08.276	0'43.942		1'09.623	0'44.641		1'08.530	0'43.954		1'09.406	0'44.696	
7 ^a - 3	1'38.975	0'30.228		1'38.529	0'30.253		1'40.620	0'30.997		1'38.955	0'30.425		1'41.889	0'32.483	
8 ^a - 1	0'24.653	0'24.653	215.569	0'24.383	0'24.383	212.181	0'24.862	0'24.862	204.546	0'24.795	0'24.795	214.286	0'24.987	0'24.987	211.351
8 ^a - 2	1'10.598	0'45.945		1'08.718	0'44.335		1'09.340	0'44.478		1'08.856	0'44.061		1'09.302	0'44.315	
8 ^a - 3	1'41.322	0'30.724		1'39.315	0'30.597		1'39.978	0'30.638		1'39.271	0'30.415		1'40.501	0'31.199	
9 ^a - 1	0'25.185	0'25.185	190.141	0'24.856	0'24.856	210.527	0'25.054	0'25.054	204.159	0'24.637	0'24.637	215.140	0'24.735	0'24.735	204.934
9 ^a - 2	1'10.349	0'45.164	PIT	1'09.080	0'44.224		1'09.749	0'44.695		1'08.550	0'43.913		1'09.295	0'44.560	
9 ^a - 3	1'54.511	0'44.162		1'40.818	0'31.738		1'40.160	0'30.411		1'39.258	0'30.708		1'40.341	0'31.046	
10 ^a - 1				0'24.632	0'24.632	212.181	0'24.911	0'24.911	200.744	0'24.500	0'24.500	215.140	0'24.557	0'24.557	210.527
10 ^a - 2				1'08.875	0'44.243		1'09.420	0'44.509		1'08.459	0'43.959		1'08.960	0'44.403	
10 ^a - 3				1'39.280	0'30.405		1'39.906	0'30.486		1'38.916	0'30.457		1'39.835	0'30.875	
11 ^a - 1				0'24.480	0'24.480	217.304	0'25.097	0'25.097	204.546	0'24.584	0'24.584	214.286	0'24.654	0'24.654	212.181
11 ^a - 2				1'08.561	0'44.081		1'09.536	0'44.439		1'08.616	0'44.032		1'09.633	0'44.979	
11 ^a - 3				1'38.837	0'30.276		1'39.981	0'30.445		1'39.034	0'30.418		1'40.487	0'30.854	
12 ^a - 1				0'24.384	0'24.384	214.286	0'24.570	0'24.570	209.303	0'24.564	0'24.564	214.286	0'24.951	0'24.951	210.938
12 ^a - 2				1'08.586	0'44.202		1'09.382	0'44.812		1'08.522	0'43.958		1'09.425	0'44.474	
12 ^a - 3				1'38.825	0'30.239		1'39.773	0'30.391		1'40.589	0'32.067		1'40.475	0'31.050	
13 ^a - 1				0'24.554	0'24.554	215.569	0'24.808	0'24.808	210.527	0'24.625	0'24.625	216.001	0'24.813	0'24.813	213.439
13 ^a - 2				1'10.208	0'45.654		1'09.198	0'44.390		1'09.005	0'44.380		1'08.981	0'44.168	
13 ^a - 3				1'40.881	0'30.673		1'39.593	0'30.395		1'39.500	0'30.495		1'39.953	0'30.972	
14 ^a - 1				0'24.518	0'24.518	215.140	0'26.664	0'26.664	192.858	0'24.570	0'24.570	216.001	0'25.376	0'25.376	210.117
14 ^a - 2				1'08.543	0'44.025		1'11.273	0'44.609		1'08.636	0'44.066		1'09.812	0'44.436	
14 ^a - 3				1'38.874	0'30.331		1'41.736	0'30.463		1'39.161	0'30.525		1'40.720	0'30.908	
15 ^a - 1				0'24.548	0'24.548	214.712	0'24.685	0'24.685	197.803	0'24.683	0'24.683	215.569	0'24.825	0'24.825	208.495
15 ^a - 2				1'08.816	0'44.268		1'09.217	0'44.532		1'08.777	0'44.094		1'09.103	0'44.278	
15 ^a - 3				1'39.168	0'30.352		1'39.856	0'30.639		1'39.757	0'30.980		1'40.042	0'30.939	

Ideal Lap	
0'24.428	0'24.428
1'08.319	0'43.891
1'38.547	0'30.228

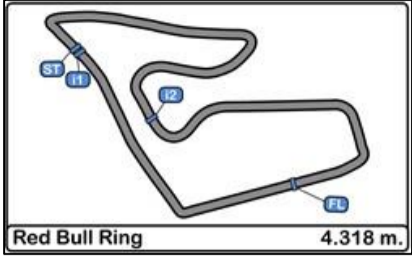
Ideal Lap	
0'24.334	0'24.334
1'08.221	0'43.887
1'38.460	0'30.239

Ideal Lap	
0'24.570	0'24.570
1'08.957	0'44.387
1'39.348	0'30.391

Ideal Lap	
0'24.409	0'24.409
1'08.312	0'43.903
1'38.727	0'30.415

Ideal Lap	
0'24.472	0'24.472
1'08.640	0'44.168
1'39.437	0'30.797

Ideal Best Lap	
0'24.237	0'24.237
1'07.694	0'43.457
1'37.663	0'29.969



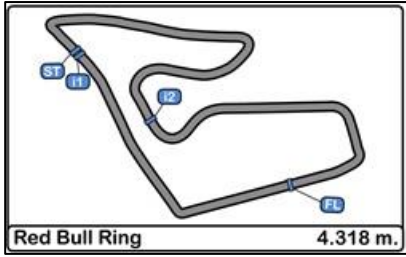
Red Bull Ring Circuit SEAT León Eurocup RACE 2

Best Sectors Results

11/09/2016

Sector - 1				Sector - 2				Sector - 3				Ideal Lap vs Best Lap			
Ord.	Nº	Driver	Time	Nº	Driver	Time	Nº	Driver	Time	Ord.	Nº	Driver	Ideal Lap	Best Lap	Ord.
1	10	Niels Langeveld	24.237	3	Julien Briché	43.457	3	Julien Briché	29.969	1	3	Julien Briché	1'37.816	1'37.931	1
2	34	Stian Paulsen	24.266	1	Mikel Azcona Troyas	43.489	5	Alexander Morgan	30.000	2	10	Niels Langeveld	1'37.831	1'37.992	2
3	20	Lourenço Beirão Da Veiga	24.297	5	Alexander Morgan	43.557	10	Niels Langeveld	30.011	3	5	Alexander Morgan	1'37.929	1'38.028	3
4	61	Mario Dablander	24.334	4	Lucas Orrock	43.579	1	Mikel Azcona Troyas	30.019	4	1	Mikel Azcona Troyas	1'37.952	1'38.090	4
5	44	Facundo Della Motta	24.346	10	Niels Langeveld	43.583	34	Stian Paulsen	30.072	5	4	Lucas Orrock	1'38.121	1'38.374	5
6	4	Lucas Orrock	24.372	6	Faustí Salom	43.806	4	Lucas Orrock	30.170	6	34	Stian Paulsen	1'38.208	1'38.722	9
7	5	Alexander Morgan	24.372	20	Lourenço Beirão Da Veiga	43.850	6	Faustí Salom	30.191	7	6	Faustí Salom	1'38.401	1'38.588	7
8	3	Julien Briché	24.390	34	Stian Paulsen	43.870	50	Nelson Lukes	30.228	8	20	Lourenço Beirão Da Veiga	1'38.419	1'38.614	8
9	6	Faustí Salom	24.404	61	Mario Dablander	43.887	61	Mario Dablander	30.239	9	61	Mario Dablander	1'38.460	1'38.529	6
10	108	Nicola Baldan	24.409	50	Nelson Lukes	43.891	20	Lourenço Beirão Da Veiga	30.272	10	50	Nelson Lukes	1'38.547	1'38.864	12
11	50	Nelson Lukes	24.428	108	Nicola Baldan	43.903	44	Facundo Della Motta	30.272	11	44	Facundo Della Motta	1'38.642	1'38.795	10
12	1	Mikel Azcona Troyas	24.444	44	Facundo Della Motta	44.024	21	Marie Baus - Coppens	30.328	12	108	Nicola Baldan	1'38.727	1'38.833	11
13	21	Marie Baus - Coppens	24.464	112	Alberto Vescovi	44.168	99	Maurits Sandberg	30.391	13	21	Marie Baus - Coppens	1'38.969	1'39.432	13
14	112	Alberto Vescovi	24.472	21	Marie Baus - Coppens	44.177	108	Nicola Baldan	30.415	14	99	Maurits Sandberg	1'39.348	1'39.593	14
15	99	Maurits Sandberg	24.570	99	Maurits Sandberg	44.387	112	Alberto Vescovi	30.797	15	112	Alberto Vescovi	1'39.437	1'39.835	15





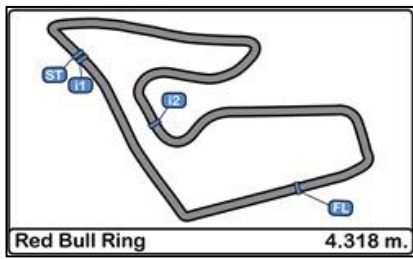
Red Bull Ring Circuit SEAT León Eurocup RACE 2

BEST TOP SPEEDS

11/09/2016

Ord.	Nº	Entrant	Nat.	Driver	Nat.	Team	Top 1		Top 2		Top 3		Top 4		Top 5		Avg.
							Km/h	Lap	Km/h	Lap	Km/h	Lap	Km/h	Lap	Km/h	Lap	
1	10	BAPORO MOTORSPORT	NLD	Niels Langeveld	NLD		219.512	13	218.623	3	217.742	7	217.304	6	216.867	4	218.010
2	6	BAPORO MOTORSPORT	ESP	Faustí Salom	ESP		217.304	5	216.867	6	216.867	7	216.867	3	216.433	9	216.868
3	20	PCR SPORT	PRT	Lourenço Beirão Da Veiga	PRT		217.304	7	216.433	6	215.139	11	215.139	5	214.286	12	215.660
4	61	SEAT AUSTRIA	AUT	Mario Dablander	AUT		217.304	7	217.304	11	216.867	5	215.569	13	215.569	2	216.523
5	4	WOLF-POWER RACING	GBR	Lucas Orrock	GBR		216.867	7	216.433	5	215.569	6	215.139	3	214.286	10	215.659
6	44	BAPORO MOTORSPORT	ARG	Facundo Della Motta	ARG		216.867	11	216.433	12	215.139	3	214.712	6	214.286	13	215.487
7	34	STIAN PAULSEN RACING	NOR	Stian Paulsen	NOR		216.433	11	216.000	7	216.000	8	215.569	6	215.569	12	215.914
8	108	PIT LANE COMPETIZIONI	ITA	Nicola Baldan	ITA		216.000	5	216.000	13	216.000	14	215.569	15	215.139	4	215.742
9	21	MARIE BAUS-COPPENS	FRA	Marie Baus - Coppens	FRA		215.569	2	214.286	3	213.439	9	213.018	8	212.598	10	213.782
10	50	NELSON LUKES	FRA	Nelson Lukes	FRA		215.569	8	215.139	4	215.139	5	214.712	6	213.861	7	214.884
11	1	PCR SPORT	ESP	Mikel Azcona Troyas	ESP		214.712	4	213.861	9	213.439	7	213.439	11	213.439	15	213.778
12	5	WOLF-POWER RACING	GBR	Alexander Morgan	GBR		214.712	5	214.286	14	214.286	6	214.286	8	214.286	13	214.371
13	3	JULIEN BRICHÉ	FRA	Julien Briché	FRA		213.861	7	213.861	10	213.439	14	213.439	6	213.439	8	213.608
14	112	PIT LANE COMPETIZIONI	ITA	Alberto Vescovi	ITA		213.861	7	213.439	13	213.439	3	213.018	6	212.181	4	213.187
15	99	BAPORO MOTORSPORT	NLD	Maurits Sandberg	NLD		211.350	6	211.350	5	210.526	13	209.302	7	209.302	12	210.366



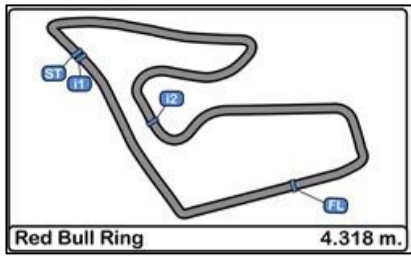


Red Bull Ring Circuit SEAT León Eurocup RACE 2

FASTEST LAP SEQUENCE

11/09/2016

Time of Day	Session Time	Nº	Entrant	Nat.	Driver	Nat.	Time	Km/h	Lap
10:40'32.701	1'44.624	108	PIT LANE COMPETIZIONI	ITA	Nicola Baldan	ITA	1'44.624	148.578	1
10:42'11.899	3'23.952	3	JULIEN BRICHÉ	FRA	Julien Briché	FRA	1'39.191	156.716	2
10:43'50.494	5'02.523	3	JULIEN BRICHÉ	FRA	Julien Briché	FRA	1'38.571	157.702	3
10:45'28.475	6'40.553	3	JULIEN BRICHÉ	FRA	Julien Briché	FRA	1'38.030	158.572	4
10:48'44.551	9'56.608	3	JULIEN BRICHÉ	FRA	Julien Briché	FRA	1'37.931	158.732	6

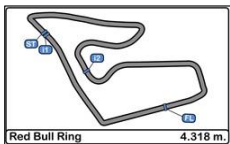


Red Bull Ring Circuit SEAT León Eurocup RACE 2

EVENT MAXIMUM SPEED

11/09/2016

Ord.	Nº	Entrant	Nat.	Driver	Nat.	Team	Km/h	Lap	Session
1	10	BAPORO MOTORSPORT	NLD	Niels Langeveld	NLD	BAPORO MOTORSPORT	219.513	13	RACE 2
2	6	BAPORO MOTORSPORT	ESP	Faustí Salom	ESP	BAPORO MOTORSPORT	217.742	7	RACE 1
3	20	PCR SPORT	PRT	Lourenço Beirão Da Veiga	PRT	PCR SPORT	217.304	7	RACE 2
4	61	SEAT AUSTRIA	AUT	Mario Dablander	AUT	SEAT AUSTRIA	217.304	7	RACE 2
5	4	WOLF-POWER RACING	GBR	Lucas Orrock	GBR	WOLF-POWER RACING	216.868	7	RACE 2
6	44	BAPORO MOTORSPORT	ARG	Facundo Della Motta	ARG	BAPORO MOTORSPORT	216.868	11	RACE 2
7	34	STIAN PAULSEN RACING	NOR	Stian Paulsen	NOR	STIAN PAULSEN RACING	216.433	11	RACE 2
8	108	PIT LANE COMPETIZIONI	ITA	Nicola Baldan	ITA	PIT LANE COMPETIZIONI	216.001	5	RACE 2
9	21	MARIE BAUS-COPPENS	FRA	Marie Baus - Coppens	FRA	MARIE BAUS-COPPENS	215.569	11	Free Practice 2
10	50	NELSON LUKES	FRA	Nelson Lukes	FRA	NELSON LUKES	215.569	9	RACE 1
11	3	JULIEN BRICHÉ	FRA	Julien Briché	FRA	JULIEN BRICHÉ	215.140	13	RACE 1
12	1	PCR SPORT	ESP	Mikel Azcona Troyas	ESP	PCR SPORT	214.712	4	RACE 2
13	5	WOLF-POWER RACING	GBR	Alexander Morgan	GBR	WOLF-POWER RACING	214.712	5	RACE 2
14	112	PIT LANE COMPETIZIONI	ITA	Alberto Vescovi	ITA	PIT LANE COMPETIZIONI	214.286	6	Qualifying
15	99	BAPORO MOTORSPORT	NLD	Maurits Sandberg	NLD	BAPORO MOTORSPORT	212.181	9	RACE 1

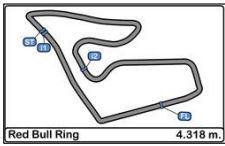


Red Bull Ring Circuit
SEAT León Eurocup
RACE 2

LAP CHART

11/09/2016

Order	Start	GAP / LT	1 ^a	GAP / LT	2 ^a	GAP / LT	3 ^a	GAP / LT	4 ^a	GAP / LT	5 ^a	GAP / LT	6 ^a	GAP / LT	7 ^a	GAP / LT	8 ^a	GAP / LT	9 ^a	GAP / LT	10 ^a	GAP / LT	11 ^a	GAP / LT
1 ^o	108	1'38.381	108	1'44.624	3	1'39.191	3	1'38.571	3	1'38.03	3	1'38.124	3	1'37.931	3	1'37.997	3	1'38.162	3	1'38.345	3	1'38.251	3	1'38.34
2 ^o	3	0'782 1'38.270	3	0.137 1'44.761	108	1.115 1'40.443	5	2.062 1'38.897	5	2.233 1'38.201	5	2.183 1'38.074	5	2.497 1'38.245	5	2.528 1'38.028	5	2.732 1'38.366	5	2.806 1'38.419	5	3.058 1'38.503	5	2.976 1'38.258
3 ^o	50	0'705 1'38.193	50	1.086 1'45.71	50	1.314 1'39.556	108	2.993 1'40.449	108	3.875 1'38.912	108	4.584 1'38.833	1	5.244 1'38.374	1	5.606 1'38.359	1	5.697 1'38.253	1	5.586 1'38.234	1	5.684 1'38.349	1	5.443 1'38.099
4 ^o	20	0'483 1'37.971	20	1.277 1'45.901	20	1.521 1'39.572	1	3.448 1'39.544	1	3.998 1'38.58	1	4.801 1'38.927	108	6.074 1'39.421	108	7.032 1'38.955	108	8.141 1'39.271	108	9.054 1'39.258	108	9.719 1'38.916	108	10.413 1'39.034
5 ^o	4	0'476 1'37.964	5	1.867 1'46.491	5	1.736 1'39.197	50	3.831 1'41.088	50	5.378 1'39.577	50	6.189 1'38.935	50	7.122 1'38.864	50	8.100 1'38.975	34	9.444 1'39.007	34	9.980 1'38.881	34	10.451 1'38.722	34	10.961 1'38.85
6 ^o	61	0'419 1'37.907	1	1.951 1'46.575	61	2.284 1'39.649	6	4.851 1'40.371	34	6.386 1'39.157	34	7.043 1'38.781	34	7.857 1'38.745	34	8.599 1'38.739	6	10.392 1'39.133	4	13.111 1'40.825	4	13.377 1'38.517	4	13.475 1'38.438
7 ^o	1	0'178 1'37.666	61	1.963 1'46.587	1	2.475 1'39.852	61	4.984 1'41.271	6	7.015 1'40.194	6	7.849 1'38.958	6	8.506 1'38.588	6	9.421 1'38.912	4	10.631 1'39.215	61	13.909 1'40.818	61	14.938 1'39.28	61	15.435 1'38.837
8 ^o	10	0'113 1'37.601	4	2.055 1'46.679	4	2.730 1'40.003	34	5.259 1'39.949	10	7.555 1'39.526	4	8.529 1'38.608	4	8.972 1'38.374	4	9.578 1'38.603	50	11.260 1'41.322	10	14.127 1'39.861	10	15.184 1'39.308	10	15.801 1'38.957
9 ^o	6	0'024 1'37.512	6	2.806 1'47.43	6	3.051 1'39.573	4	5.714 1'41.555	4	8.045 1'40.361	61	9.032 1'38.769	61	9.751 1'38.65	61	10.283 1'38.529	61	11.436 1'39.315	20	14.450 1'40.399	20	15.936 1'39.737	20	16.785 1'39.189
10 ^o	5	0'000 1'37.488	34	3.061 1'47.685	10	3.563 1'39.802	20	5.779 1'42.829	61	8.387 1'41.433	20	9.524 1'39.055	20	10.218 1'38.625	20	10.835 1'38.614	20	12.396 1'39.723	6	14.681 1'42.634	44	16.933 1'40.391	44	17.398 1'38.805
11 ^o	34	0'906 1'38.394	10	3.089 1'47.713	34	3.881 1'40.148	44	5.904 1'39.653	20	8.593 1'40.844	44	9.939 1'39.008	44	10.803 1'38.795	10	11.021 1'37.992	10	12.611 1'39.752	44	14.793 1'39.518	6	18.374 1'41.944	21	23.665 1'42.154
12 ^o	44	1'149 1'38.637	44	3.906 1'48.53	44	4.822 1'40.244	10	6.059 1'41.067	44	9.055 1'41.181	10	10.831 1'41.4	10	11.026 1'38.126	44	12.411 1'39.605	44	13.620 1'39.371	21	17.704 1'40.043	21	19.851 1'40.398	99	24.931 1'39.981
13 ^o	21	1'482 1'38.970	21	4.163 1'48.787	21	5.048 1'40.213	21	6.143 1'39.666	21	9.422 1'41.309	21	11.213 1'39.915	21	12.714 1'39.432	21	14.421 1'39.704	21	16.006 1'39.747	99	21.635 1'40.16	99	23.290 1'39.906	112	27.216 1'40.487
14 ^o	112	1'714 1'39.202	112	4.887 1'49.511	112	6.235 1'40.676	112	7.890 1'40.226	112	10.148 1'40.288	112	12.064 1'40.04	112	15.258 1'41.125	99	18.004 1'40.62	99	19.820 1'39.978	112	23.485 1'40.341	112	25.069 1'39.635	6	44.825 2'04.791
15 ^o	99	2'534 1'40.022	99	5.208 1'49.832	99	6.661 1'40.781	99	8.575 1'40.485	99	10.712 1'40.167	99	12.420 1'39.832	99	15.381 1'40.892	112	19.150 1'41.889	112	21.489 1'40.501	50	27.426 1'54.511				



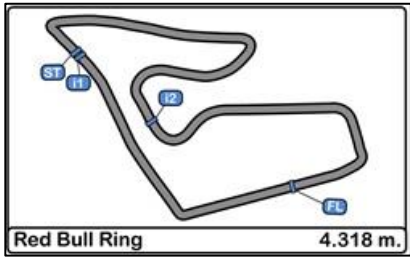
**Red Bull Ring Circuit
SEAT León Eurocup
RACE 2**

LAP CHART

11/09/2016

Order	12 ^a	GAP / LT	13 ^a	GAP / LT	14 ^a	GAP / LT	15 ^a	GAP / LT
1 ^o	3	1'38.34	3	1'38.474	3	1'38.446	3	1'38.888
2 ^o	5	2.959 1'38.323	5	2.899 1'38.414	5	2.812 1'38.359	1	4.039 1'38.238
3 ^o	1	5.193 1'38.09	1	4.961 1'38.242	1	4.689 1'38.174	5	5.492 1'41.568
4 ^o	34	12.419 1'39.798	34	13.102 1'39.157	34	13.728 1'39.072	34	13.853 1'39.013
5 ^o	108	12.662 1'40.589	108	13.688 1'39.5	108	14.403 1'39.161	4	15.233 1'39.488
6 ^o	4	13.748 1'38.613	4	14.007 1'38.733	4	14.633 1'39.072	108	15.272 1'39.757
7 ^o	61	15.920 1'38.825	10	18.080 1'40.193	10	18.296 1'38.662	10	18.067 1'38.659
8 ^o	10	16.361 1'38.9	61	18.327 1'40.881	61	18.755 1'38.874	61	19.035 1'39.168
9 ^o	20	17.751 1'39.306	20	18.794 1'39.517	20	19.994 1'39.646	20	20.737 1'39.631
10 ^o	44	18.103 1'39.045	44	19.320 1'39.691	44	20.950 1'40.076	44	21.159 1'39.097
11 ^o	21	25.106 1'39.781	21	26.810 1'40.178	99	30.773 1'41.736	99	31.741 1'39.856
12 ^o	99	26.364 1'39.773	99	27.483 1'39.593	112	33.104 1'40.72	112	34.258 1'40.042
13 ^o	112	29.351 1'40.475	112	30.830 1'39.953	6	1'25.613 1'39.521	6	1'25.866 1'39.141
14 ^o	6	1'23.705 2'17.22	6	1'24.536 1'39.307				
15 ^o								

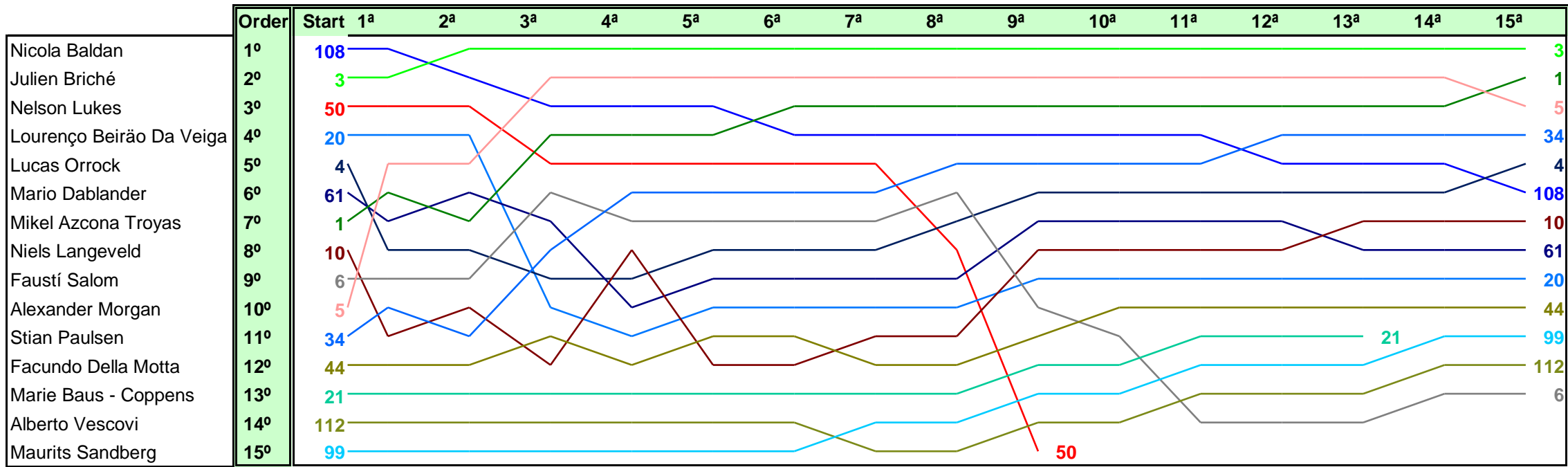
SEAT LEON EURO CUP

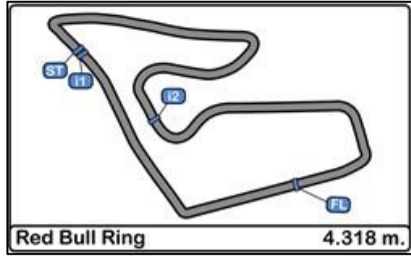


Red Bull Ring Circuit SEAT León Eurocup RACE 2

GRAPHIC LAP CHART

11/09/2016

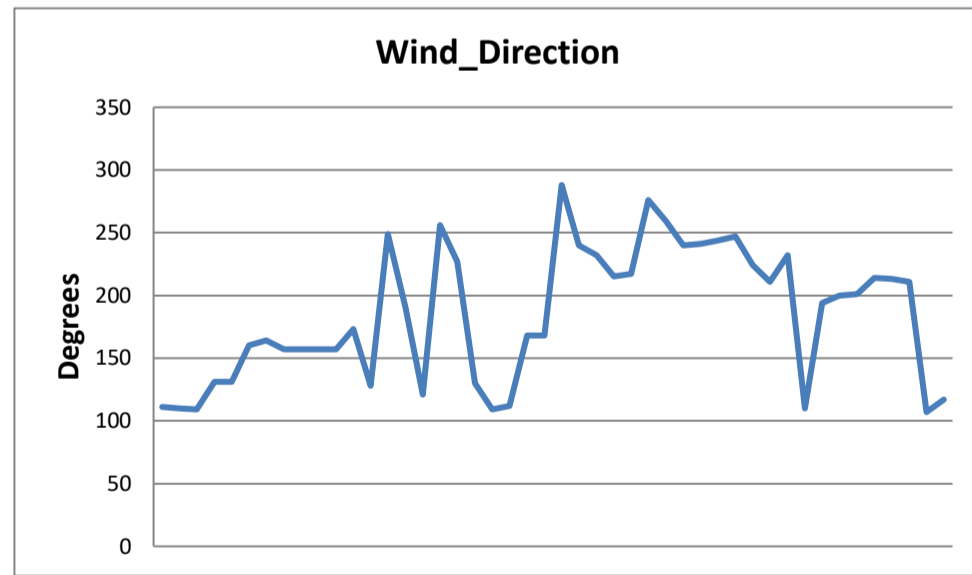
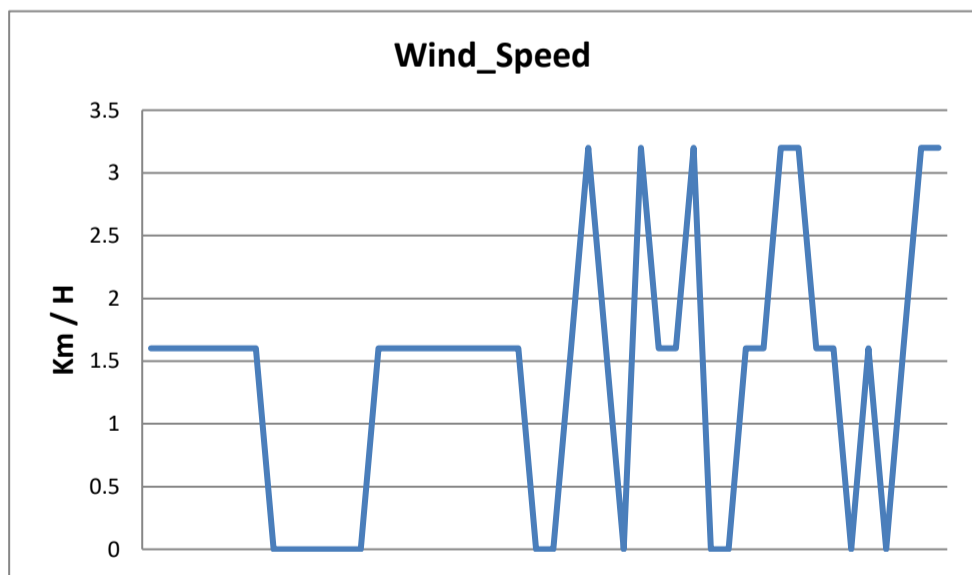
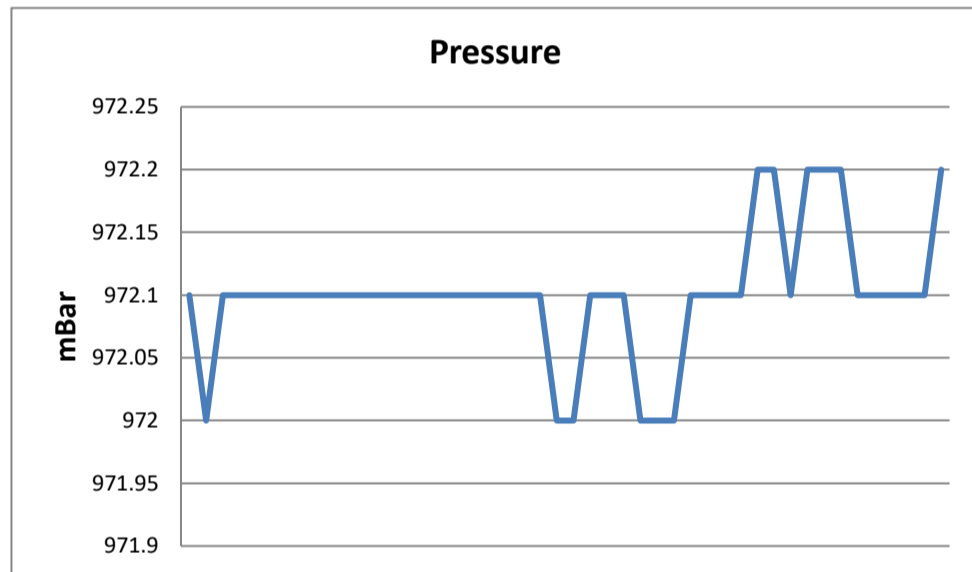
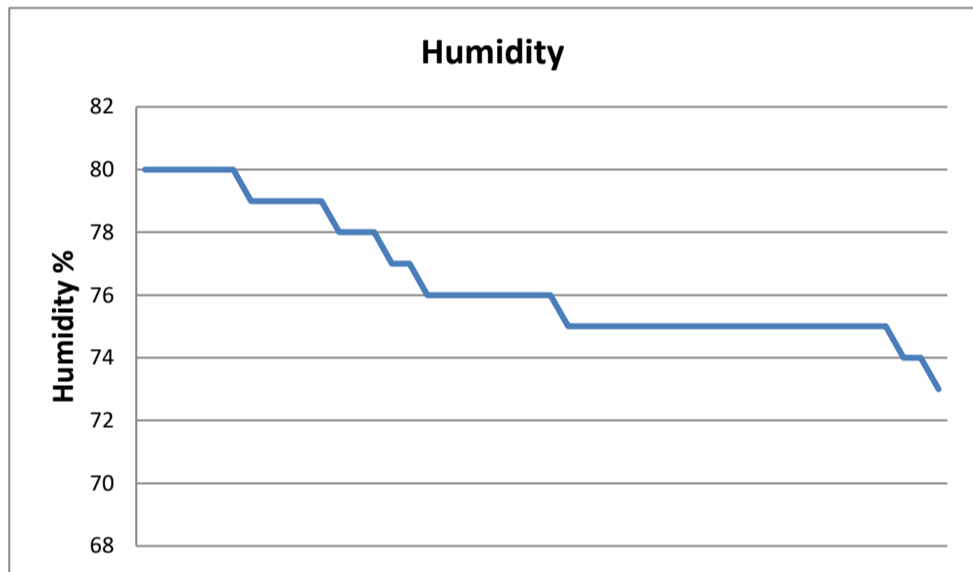
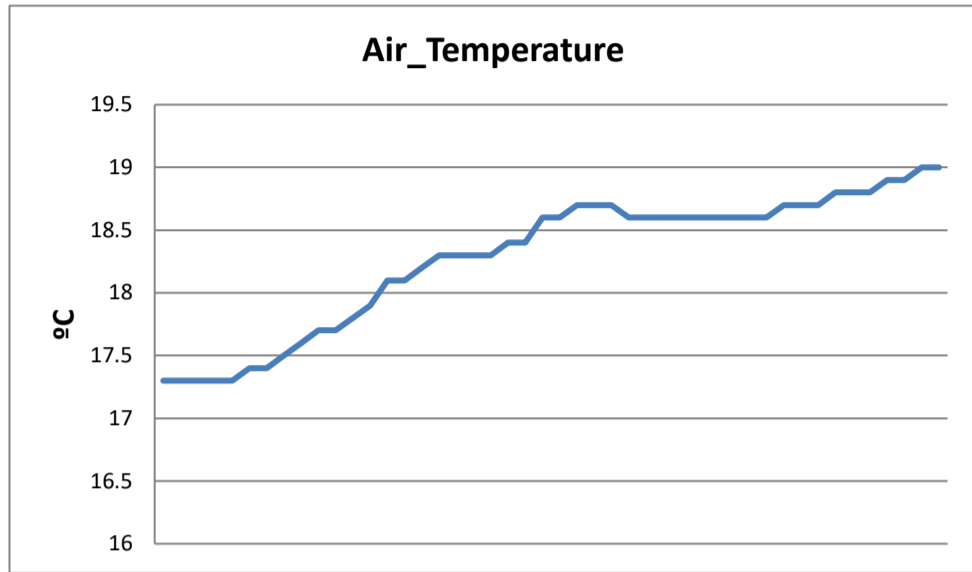
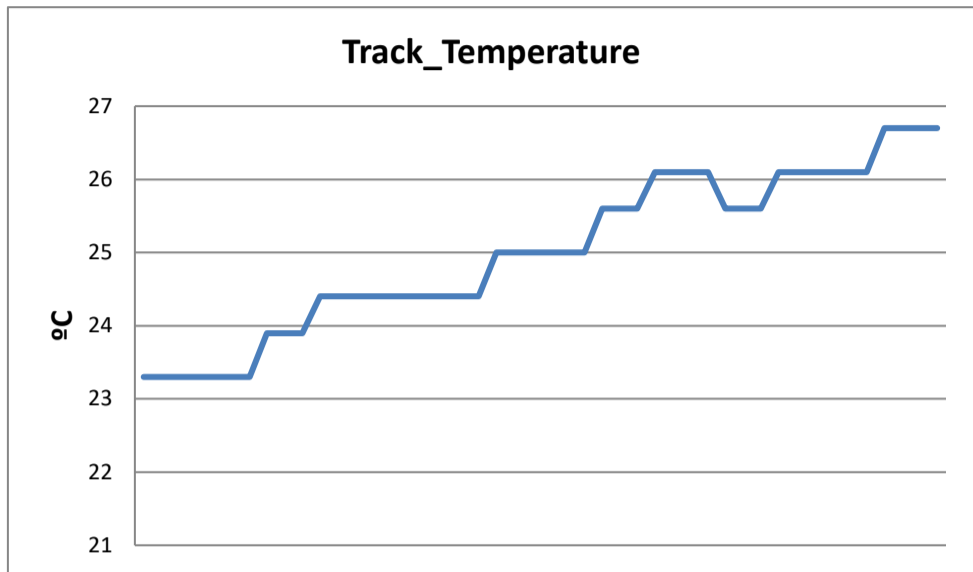


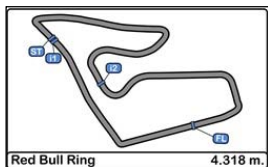


Red Bull Ring Circuit SEAT León Eurocup RACE 2

WEATHER REPORT

Track Status DRY





Red Bull Ring Circuit SEAT León Eurocup 2nd RACE

FINAL RESULTS

11/09/2016

<u>Clas.</u>	<u>Nº</u>	<u>Entrant</u>	<u>Nat.</u>	<u>Driver</u>	<u>Nat.</u>	<u>Team</u>	<u>Laps</u>	<u>Total Time</u>	<u>Km/h.</u>	<u>Gap</u>	<u>Best</u>	<u>Time</u>	<u>Km/h.</u>
1	3	JULIEN BRICHÉ	FRA	Julien Briché	FRA	JULIEN BRICHÉ	15	24'41.851	157.352		6	1'37.931	158.733
2	1	PCR SPORT	ESP	Mikel Azcona Troyas	ESP	PCR SPORT	15	24'45.890	156.925	4"039	12	1'38.090	158.475
3	5	WOLF-POWER RACING	GBR	Alexander Morgan	GBR	WOLF-POWER RACING	15	24'47.343	156.771	5"492	7	1'38.028	158.576
4	34	STIAN PAULSEN RACING	NOR	Stian Paulsen	NOR	STIAN PAULSEN RACING	15	24'55.704	155.895	13"853	10	1'38.722	157.461
5	4	WOLF-POWER RACING	GBR	Lucas Orrock	GBR	WOLF-POWER RACING	15	24'57.084	155.751	15"233	6	1'38.374	158.018
6	108	PIT LANE COMPETIZIONI	ITA	Nicola Baldan	ITA	PIT LANE COMPETIZIONI	15	24'57.123	155.747	15"272	5	1'38.833	157.284
7	10	BAPORO MOTORSPORT	NLD	Niels Langeveld	NLD	BAPORO MOTORSPORT	15	24'59.918	155.457	18"067	7	1'37.992	158.634
8	61	SEAT AUSTRIA	AUT	Mario Dablander	AUT	SEAT AUSTRIA	15	25'00.886	155.357	19"035	7	1'38.529	157.769
9	20	PCR SPORT	PRT	Lourenço Beirão Da Veiga	PRT	PCR SPORT	15	25'02.588	155.181	20"737	7	1'38.614	157.633
10	44	BAPORO MOTORSPORT	ARG	Facundo Della Motta	ARG	BAPORO MOTORSPORT	15	25'03.010	155.137	21"159	6	1'38.795	157.344
11	99	BAPORO MOTORSPORT	NLD	Maurits Sandberg	NLD	BAPORO MOTORSPORT	15	25'13.592	154.053	31"741	13	1'39.593	156.084
12	112	PIT LANE COMPETIZIONI	ITA	Alberto Vescovi	ITA	PIT LANE COMPETIZIONI	15	25'16.109	153.797	34"258	10	1'39.835	155.705
13	6	BAPORO MOTORSPORT	ESP	Faustí Salom	ESP	BAPORO MOTORSPORT	15	26'07.717	148.734	1'25"866	6	1'38.588	157.675
14	21	MARIE BAUS-COPPENS	FRA	Marie Baus - Coppens	FRA	MARIE BAUS-COPPENS	13	21'51.327	154.106	2 Lap.	6	1'39.432	156.336

NOT CLASSIFIED

15	50	NELSON LUKES	FRA	Nelson Lukes	FRA	NELSON LUKES	9	15'18.538	152.311	6 Lap.	6	1'38.864	157.235
----	----	--------------	-----	--------------	-----	--------------	---	-----------	---------	--------	---	----------	---------

Fastest lap Julien Briché 1'37.931 158.733 Km/h.

CAR 5. 3 SECONDS TIME PENALTY ADDED TO RACE TIME

Published at:.....

Track Status **DRY**

Stewards:	Race Director:	Timekeeper: 
-----------	----------------	--

